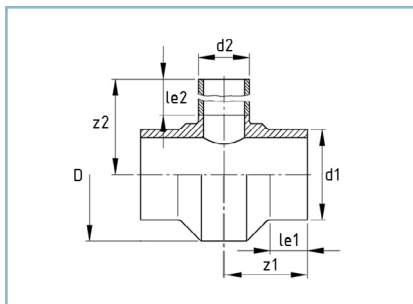


## T-Stück, kurz

- Durchgang mit kurzen Schweißenden
- Abgang mit langem Schweißende
- voll druckbelastbar
- egale T-Stücke der Außendurchmesser 560, 630, 710 und 900 werden wirtschaftlich aus unseren patentierten Profilhohlstäben gefertigt

## Tee, short form

- barrel diameter with short welding ends
- branch with long welding end
- in conformity with pressure class
- equal tees with outer diameter 560, 630, 710 and 900 are manufactured from our patented profile bars



Toleranzen/tolerance (S./p. 11):

$l_{e2}, z_2 \rightarrow$  Tab./tab. 1

TS - 2021 #1

|     |      |    |    |    |      |    |      |    |   |     |   |     |
|-----|------|----|----|----|------|----|------|----|---|-----|---|-----|
| SDR | ≥ 41 | 33 | 26 | 21 | 17,6 | 17 | 13,6 | 11 | 9 | 7,4 | 6 | ≤ 5 |
|-----|------|----|----|----|------|----|------|----|---|-----|---|-----|

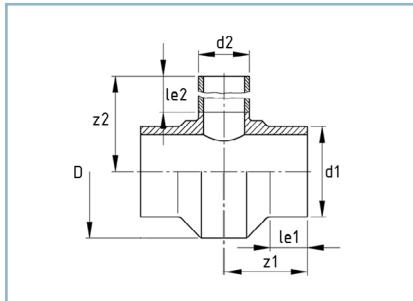
| $d_1$ | $d_2$ | $l_{e1}$ | $l_{e2}$ | $z_1$ | $z_2$ | D   | Gewicht<br>weight |        |      |
|-------|-------|----------|----------|-------|-------|-----|-------------------|--------|------|
|       |       |          |          |       |       |     | kg                | PE 100 | PP-R |
| 280   | 63    | 75       | 200      | 140   | 365   | 341 | 7,8               |        |      |
| 280   | 75    | 75       | 200      | 145   | 365   | 343 | 8,5               |        |      |
| 280   | 90    | 75       | 200      | 152,5 | 365   | 347 | 9,4               |        |      |
| 280   | 110   | 75       | 200      | 162,5 | 365   | 353 | 10,8              |        |      |
| 280   | 125   | 75       | 200      | 170   | 365   | 358 | 12,1              |        |      |
| 280   | 140   | 75       | 200      | 177,5 | 365   | 363 | 13,5              |        |      |
| 280   | 160   | 75       | 200      | 187,5 | 365   | 372 | 15,5              |        |      |
| 280   | 180   | 75       | 200      | 197,5 | 365   | 381 | 18                |        |      |
| 280   | 200   | 75       | 200      | 207,5 | 365   | 391 | 20,8              |        |      |
| 280   | 225   | 75       | 200      | 220   | 365   | 404 | 24,8              |        |      |
| 315   | 75    | 75       | 200      | 145   | 380   | 378 | 10,2              |        |      |
| 315   | 90    | 75       | 200      | 152,5 | 380   | 381 | 11,2              |        |      |
| 315   | 110   | 75       | 200      | 162,5 | 380   | 386 | 12,8              |        |      |
| 315   | 125   | 75       | 200      | 170   | 380   | 391 | 14,1              |        |      |
| 315   | 140   | 75       | 200      | 177,5 | 380   | 396 | 15,6              |        |      |
| 315   | 160   | 75       | 200      | 187,5 | 380   | 404 | 17,8              |        |      |
| 315   | 180   | 75       | 200      | 197,5 | 380   | 412 | 20,4              |        |      |
| 315   | 200   | 75       | 200      | 207,5 | 380   | 421 | 23,4              |        |      |
| 315   | 225   | 75       | 200      | 220   | 380   | 434 | 27,5              |        |      |
| 315   | 250   | 75       | 200      | 232,5 | 380   | 447 | 32,3              |        |      |
| 355   | 90    | 75       | 200      | 152,5 | 400   | 420 | 13,8              |        |      |
| 355   | 110   | 75       | 200      | 162,5 | 400   | 425 | 15,6              |        |      |
| 355   | 125   | 75       | 200      | 170   | 400   | 429 | 17                |        |      |
| 355   | 140   | 75       | 200      | 177,5 | 400   | 434 | 18,7              |        |      |
| 355   | 160   | 75       | 200      | 187,5 | 400   | 440 | 21                |        |      |
| 355   | 180   | 75       | 200      | 197,5 | 400   | 448 | 23,7              |        |      |
| 355   | 200   | 75       | 200      | 207,5 | 400   | 457 | 26,9              |        |      |
| 355   | 225   | 75       | 200      | 220   | 400   | 468 | 31,2              |        |      |
| 355   | 250   | 75       | 200      | 232,5 | 400   | 481 | 36,2              |        |      |
| 355   | 280   | 75       | 200      | 250   | 400   | 497 | 43,6              |        |      |

## T-Stück, kurz

- Durchgang mit kurzen Schweißenden
- Abgang mit langem Schweißende
- voll druckbelastbar
- egale T-Stücke der Außendurchmesser 560, 630, 710 und 900 werden wirtschaftlich aus unseren patentierten Profilhohlstäben gefertigt

## Tee, short form

- barrel diameter with short welding ends
- branch with long welding end
- in conformity with pressure class
- equal tees with outer diameter 560, 630, 710 and 900 are manufactured from our patented profile bars



DVGW:  
DV-8606BT0423 (Ø 75 mm - Ø 225 mm)  
DV-8611BT0424 (Ø 250 mm - Ø 630 mm)

Toleranzen/tolerance (S./p. 11):

$l_{e2}, z_2 \rightarrow$  Tab./tab. 1

TS - 2021 #1

|     |      |    |    |    |      |    |      |    |   |     |   |     |
|-----|------|----|----|----|------|----|------|----|---|-----|---|-----|
| SDR | ≥ 41 | 33 | 26 | 21 | 17,6 | 17 | 13,6 | 11 | 9 | 7,4 | 6 | ≤ 5 |
|-----|------|----|----|----|------|----|------|----|---|-----|---|-----|

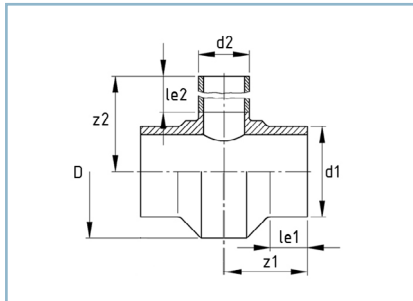
| d <sub>1</sub> | d <sub>2</sub> | l <sub>e1</sub> | l <sub>e2</sub> | z <sub>1</sub> | z <sub>2</sub> | D   | Gewicht<br>weight |        |      |
|----------------|----------------|-----------------|-----------------|----------------|----------------|-----|-------------------|--------|------|
|                |                |                 |                 |                |                |     | kg                | PE 100 | PP-R |
| 400            | 110            | 75              | 200             | 162,5          | 425            | 468 | 18,7              |        |      |
| 400            | 125            | 75              | 200             | 170            | 425            | 472 | 20,3              |        |      |
| 400            | 140            | 75              | 200             | 177,5          | 425            | 476 | 22,1              |        |      |
| 400            | 160            | 75              | 200             | 187,5          | 425            | 483 | 24,7              |        |      |
| 400            | 180            | 75              | 200             | 197,5          | 425            | 490 | 27,6              |        |      |
| 400            | 200            | 75              | 200             | 207,5          | 425            | 497 | 30,9              |        |      |
| 400            | 225            | 75              | 200             | 220            | 425            | 508 | 35,5              |        |      |
| 400            | 250            | 75              | 200             | 232,5          | 425            | 520 | 40,7              |        |      |
| 400            | 280            | 75              | 200             | 250            | 425            | 535 | 48,5              |        |      |
| 400            | 315            | 75              | 200             | 267,5          | 425            | 554 | 58,3              |        |      |
| 450            | 125            | 75              | 200             | 170            | 450            | 520 | 24,4              |        |      |
| 450            | 140            | 75              | 200             | 177,5          | 450            | 524 | 26,4              |        |      |
| 450            | 160            | 75              | 200             | 187,5          | 450            | 530 | 29,2              |        |      |
| 450            | 180            | 75              | 200             | 197,5          | 450            | 536 | 32,3              |        |      |
| 450            | 200            | 75              | 200             | 207,5          | 450            | 544 | 35,9              |        |      |
| 450            | 225            | 75              | 200             | 220            | 450            | 553 | 40,8              |        |      |
| 450            | 250            | 75              | 200             | 232,5          | 450            | 564 | 46,3              |        |      |
| 450            | 280            | 75              | 200             | 250            | 450            | 578 | 54,5              |        |      |
| 450            | 315            | 75              | 200             | 267,5          | 450            | 596 | 64,8              |        |      |
| 450            | 355            | 75              | 200             | 287,5          | 450            | 618 | 78,2              |        |      |
| 450            | 450            | 75              | 300             | 335            | 550            | 678 | 109               |        |      |
| 500            | 140            | 75              | 200             | 177,5          | 475            | 573 | 31                |        |      |
| 500            | 160            | 75              | 200             | 187,5          | 475            | 578 | 34,1              |        |      |
| 500            | 180            | 75              | 200             | 197,5          | 475            | 584 | 37,5              |        |      |
| 500            | 200            | 75              | 200             | 207,5          | 475            | 590 | 41,3              |        |      |
| 500            | 225            | 75              | 200             | 220            | 475            | 599 | 46,5              |        |      |
| 500            | 250            | 75              | 200             | 232,5          | 475            | 609 | 52,3              |        |      |
| 500            | 280            | 75              | 200             | 250            | 475            | 622 | 61                |        |      |
| 500            | 315            | 75              | 200             | 267,5          | 475            | 639 | 71,8              |        |      |
| 500            | 355            | 75              | 200             | 287,5          | 475            | 660 | 85,8              |        |      |
| 500            | 400            | 75              | 300             | 310            | 575            | 685 | 104,1             |        |      |

## T-Stück, kurz

- Durchgang mit kurzen Schweißenden
- Abgang mit langem Schweißende
- voll druckbelastbar
- egale T-Stücke der Außendurchmesser 560, 630, 710 und 900 werden wirtschaftlich aus unseren patentierten Profilhohlstäben gefertigt

## Tee, short form

- barrel diameter with short welding ends
- branch with long welding end
- in conformity with pressure class
- equal tees with outer diameter 560, 630, 710 and 900 are manufactured from our patented profile bars



DVGW:  
DV-8606BT0423 (Ø 75 mm - Ø 225 mm)  
DV-8611BT0424 (Ø 250 mm - Ø 630 mm)

Toleranzen/tolerance (S./p. 11):

$l_{e2}, z_2 \rightarrow$  Tab./tab. 1

TS - 2021 #1

|     |      |    |    |    |      |    |      |    |   |     |   |     |
|-----|------|----|----|----|------|----|------|----|---|-----|---|-----|
| SDR | ≥ 41 | 33 | 26 | 21 | 17,6 | 17 | 13,6 | 11 | 9 | 7,4 | 6 | ≤ 5 |
|-----|------|----|----|----|------|----|------|----|---|-----|---|-----|

| d <sub>1</sub> | d <sub>2</sub> | l <sub>e1</sub> | l <sub>e2</sub> | z <sub>1</sub> | z <sub>2</sub> | D   | Gewicht<br>weight |        |      |
|----------------|----------------|-----------------|-----------------|----------------|----------------|-----|-------------------|--------|------|
|                |                |                 |                 |                |                |     | kg                | PE 100 | PP-R |
| 500            | 500            | 75              | 300             | 390            | 575            | -   | 113               |        |      |
| 560            | 160            | 75              | 200             | 187,5          | 500            | 636 | 40,6              |        |      |
| 560            | 180            | 75              | 200             | 197,5          | 500            | 641 | 44,4              |        |      |
| 560            | 200            | 75              | 200             | 207,5          | 500            | 647 | 48,5              |        |      |
| 560            | 225            | 75              | 200             | 220            | 500            | 655 | 54,1              |        |      |
| 560            | 250            | 75              | 200             | 232,5          | 500            | 664 | 60,4              |        |      |
| 560            | 280            | 75              | 200             | 250            | 500            | 676 | 69,6              |        |      |
| 560            | 315            | 75              | 200             | 267,5          | 500            | 692 | 81                |        |      |
| 560            | 355            | 75              | 200             | 287,5          | 500            | 711 | 95,7              |        |      |
| 560            | 400            | 75              | 300             | 310            | 600            | 734 | 114,8             |        |      |
| 560            | 450            | 75              | 300             | 335            | 600            | 763 | 140,6             |        |      |
| 560            | 560            | 75              | 300             | 425            | 600            | -   | 119               |        |      |
| 630            | 180            | 75              | 200             | 197,5          | 540            | 708 | 53,3              |        |      |
| 630            | 200            | 75              | 200             | 207,5          | 540            | 714 | 57,8              |        |      |
| 630            | 225            | 75              | 200             | 220            | 540            | 721 | 63,9              |        |      |
| 630            | 250            | 75              | 200             | 232,5          | 540            | 729 | 70,7              |        |      |
| 630            | 280            | 75              | 200             | 250            | 540            | 740 | 80,7              |        |      |
| 630            | 315            | 75              | 200             | 267,5          | 540            | 754 | 92,8              |        |      |
| 630            | 355            | 75              | 200             | 287,5          | 540            | 772 | 108,3             |        |      |
| 630            | 400            | 75              | 300             | 310            | 640            | 794 | 128,5             |        |      |
| 630            | 450            | 75              | 300             | 335            | 640            | 820 | 155,5             |        |      |
| 630            | 500            | 75              | 300             | 360            | 640            | 849 | 187               |        |      |
| 630            | 630            | 100             | 300             | 500            | 640            | -   | 172               |        |      |

In unserem Downloadportal auf [www.reinert-ritz.de](http://www.reinert-ritz.de) finden Sie unsere Broschüre zum Thema „Norm- und Sonderformteile“ mit vielen hilfreichen Informationen.

In our download portal at [www.reinert-ritz.de](http://www.reinert-ritz.de), you can find our brochure on „Standard and special fittings“ with a lot of useful information.

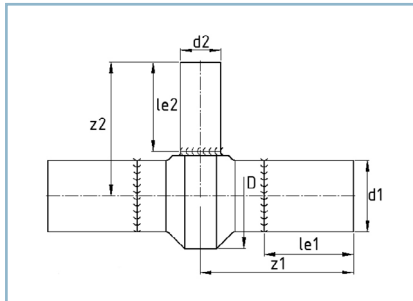


## T-Stück, lang

- lange Schweißenden, für E-Muffen-Schweißung geeignet
- voll druckbelastbar
- egale T-Stücke der Außendurchmesser 560, 630, 710 und 900 werden wirtschaftlich aus unseren patentierten Profilhohlstäben gefertigt

## Tee, long form

- long welding ends, for the use of electrofusion sockets
- in conformity with pressure class
- equal tees with outer diameter 560, 630, 710 and 900 are manufactured from our patented profile bars



DVGW:  
DV-8606BT0423 (Ø 75 mm - Ø 225 mm)  
DV-8611BT0424 (Ø 250 mm - Ø 630 mm)

Toleranzen/tolerance (S./p. 11):

$l_{e1}, l_{e2}, z_1, z_2 \rightarrow$  Tab./tab. 1

TSL - 2021 #1

SDR    ≥ 41    33    26    21    **17,6**    **17**    13,6    **11**    9    7,4    6    ≤ 5

| d <sub>1</sub> | d <sub>2</sub> | l <sub>e1</sub> | l <sub>e2</sub> | z <sub>1</sub> | z <sub>2</sub> | D   | Gewicht<br>weight |        |      |
|----------------|----------------|-----------------|-----------------|----------------|----------------|-----|-------------------|--------|------|
|                |                |                 |                 |                |                |     | kg                | PE 100 | PP-R |
| 280            | 63             | 200             | 200             | 340            | 365            | 341 | 15,8              |        |      |
| 280            | 75             | 200             | 200             | 345            | 365            | 343 | 16,5              |        |      |
| 280            | 90             | 200             | 200             | 352,5          | 365            | 347 | 17,4              |        |      |
| 280            | 110            | 200             | 200             | 362,5          | 365            | 353 | 18,8              |        |      |
| 280            | 125            | 200             | 200             | 370            | 365            | 358 | 20,1              |        |      |
| 280            | 140            | 200             | 200             | 377,5          | 365            | 363 | 21,5              |        |      |
| 280            | 160            | 200             | 200             | 387,5          | 365            | 372 | 23,5              |        |      |
| 280            | 180            | 200             | 200             | 397,5          | 365            | 381 | 26                |        |      |
| 280            | 200            | 200             | 200             | 407,5          | 365            | 391 | 28,8              |        |      |
| 280            | 225            | 200             | 200             | 420            | 365            | 404 | 32,8              |        |      |
| 315            | 75             | 200             | 200             | 345            | 380            | 378 | 20,7              |        |      |
| 315            | 90             | 200             | 200             | 352,5          | 380            | 381 | 21,7              |        |      |
| 315            | 110            | 200             | 200             | 362,5          | 380            | 386 | 23,3              |        |      |
| 315            | 125            | 200             | 200             | 370            | 380            | 391 | 24,6              |        |      |
| 315            | 140            | 200             | 200             | 377,5          | 380            | 396 | 26,1              |        |      |
| 315            | 160            | 200             | 200             | 387,5          | 380            | 404 | 28,3              |        |      |
| 315            | 180            | 200             | 200             | 397,5          | 380            | 412 | 30,9              |        |      |
| 315            | 200            | 200             | 200             | 407,5          | 380            | 421 | 33,9              |        |      |
| 315            | 225            | 200             | 200             | 420            | 380            | 434 | 38                |        |      |
| 315            | 250            | 200             | 200             | 432,5          | 380            | 447 | 42,8              |        |      |
| 355            | 90             | 200             | 200             | 352,5          | 400            | 420 | 26,8              |        |      |
| 355            | 110            | 200             | 200             | 362,5          | 400            | 425 | 28,6              |        |      |
| 355            | 125            | 200             | 200             | 370            | 400            | 429 | 30                |        |      |
| 355            | 140            | 200             | 200             | 377,5          | 400            | 434 | 31,7              |        |      |
| 355            | 160            | 200             | 200             | 387,5          | 400            | 440 | 34                |        |      |
| 355            | 180            | 200             | 200             | 397,5          | 400            | 448 | 36,7              |        |      |
| 355            | 200            | 200             | 200             | 407,5          | 400            | 457 | 39,9              |        |      |
| 355            | 225            | 200             | 200             | 420            | 400            | 468 | 44,2              |        |      |
| 355            | 250            | 200             | 200             | 432,5          | 400            | 481 | 49,2              |        |      |
| 355            | 280            | 200             | 200             | 450            | 400            | 497 | 56,6              |        |      |

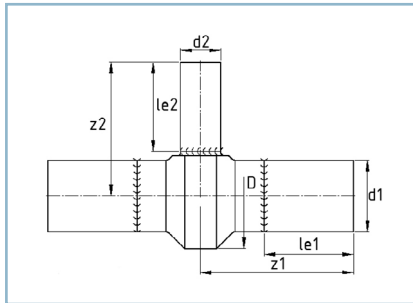
## T-Stück, lang

- lange Schweißenden, für E-Muffen-Schweißung geeignet
- voll druckbelastbar
- egale T-Stücke der Außendurchmesser 560, 630, 710 und 900 werden wirtschaftlich aus unseren patentierten Profilhohlstäben gefertigt

## Tee, long form

- long welding ends, for the use of electrofusion sockets
- in conformity with pressure class
- equal tees with outer diameter 560, 630, 710 and 900 are manufactured from our patented profile bars

TSL - 2021 #1



DVGW:  
DV-8606BT0423 (Ø 75 mm - Ø 225 mm)  
DV-8611BT0424 (Ø 250 mm - Ø 630 mm)

Toleranzen/tolerance (S./p. 11):

$l_{e1}, l_{e2}, z_1, z_2$  --> Tab./tab. 1

SDR    ≥ 41    33    26    21    **17,6**    **17**    13,6    **11**    9    7,4    6    ≤ 5

| d <sub>1</sub> | d <sub>2</sub> | l <sub>e1</sub> | l <sub>e2</sub> | z <sub>1</sub> | z <sub>2</sub> | D   | Gewicht<br>weight |        |      |
|----------------|----------------|-----------------|-----------------|----------------|----------------|-----|-------------------|--------|------|
|                |                |                 |                 |                |                |     | kg                | PE 100 | PP-R |
| 355            | 315            | 200             | 200             | 462,5          | 400            | 527 | 67,8              |        |      |
| 355            | 355            | 200             | 200             | 487,5          | 400            | 553 | 82,6              |        |      |
| 400            | 110            | 300             | 200             | 462,5          | 425            | 468 | 33,7              |        |      |
| 400            | 125            | 300             | 200             | 470            | 425            | 472 | 35,3              |        |      |
| 400            | 140            | 300             | 200             | 477,5          | 425            | 476 | 37,1              |        |      |
| 400            | 160            | 300             | 200             | 487,5          | 425            | 483 | 39,7              |        |      |
| 400            | 180            | 300             | 200             | 497,5          | 425            | 490 | 42,6              |        |      |
| 400            | 200            | 300             | 200             | 507,5          | 425            | 497 | 45,9              |        |      |
| 400            | 225            | 300             | 200             | 520            | 425            | 508 | 50,5              |        |      |
| 400            | 250            | 300             | 200             | 532,5          | 425            | 520 | 55,7              |        |      |
| 400            | 280            | 300             | 200             | 550            | 425            | 535 | 63,5              |        |      |
| 400            | 315            | 300             | 200             | 567,5          | 425            | 554 | 73,3              |        |      |
| 400            | 355            | 300             | 200             | 590            | 425            | 588 | 94,3              |        |      |
| 400            | 400            | 300             | 300             | 612,5          | 525            | 616 | 112,7             |        |      |
| 450            | 125            | 300             | 200             | 470            | 450            | 520 | 54,4              |        |      |
| 450            | 140            | 300             | 200             | 477,5          | 450            | 524 | 56,4              |        |      |
| 450            | 160            | 300             | 200             | 487,5          | 450            | 530 | 59,2              |        |      |
| 450            | 180            | 300             | 200             | 497,5          | 450            | 536 | 62,3              |        |      |
| 450            | 200            | 300             | 200             | 507,5          | 450            | 544 | 65,9              |        |      |
| 450            | 225            | 300             | 200             | 520            | 450            | 553 | 70,8              |        |      |
| 450            | 250            | 300             | 200             | 532,5          | 450            | 564 | 76,3              |        |      |
| 450            | 280            | 300             | 200             | 550            | 450            | 578 | 84,5              |        |      |
| 450            | 315            | 300             | 200             | 567,5          | 450            | 596 | 94,8              |        |      |
| 450            | 355            | 300             | 200             | 587,5          | 450            | 618 | 108,2             |        |      |
| 450            | 400            | 300             | 300             | 612,5          | 550            | 655 | 126,5             |        |      |
| 450            | 450            | 300             | 300             | 635            | 550            | 678 | 139               |        |      |
| 500            | 140            | 300             | 200             | 477,5          | 475            | 573 | 70                |        |      |
| 500            | 160            | 300             | 200             | 487,5          | 475            | 578 | 73,1              |        |      |
| 500            | 180            | 300             | 200             | 497,5          | 475            | 584 | 76,5              |        |      |
| 500            | 200            | 300             | 200             | 507,5          | 475            | 590 | 80,3              |        |      |
| 500            | 225            | 300             | 200             | 520            | 475            | 599 | 85,5              |        |      |

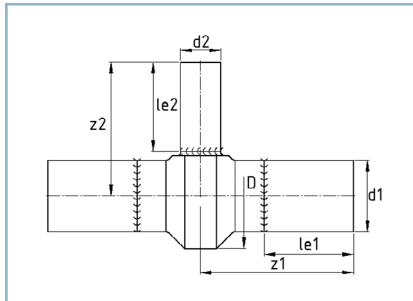
Weitere Ausführungen (z.B. Größen, Gradzahlen, Werkstoffe u. Farben) oder Anwendungen (z.B. Gas) auf Anfrage  
More designs (e.g. sizes, numbers of degrees, materials & colors) or applications (e.g. gas) on request

## T-Stück, lang

- lange Schweißenden, für E-Muffen-Schweißung geeignet
- voll druckbelastbar
- egale T-Stücke der Außendurchmesser 560, 630, 710 und 900 werden wirtschaftlich aus unseren patentierten Profilhohlstäben gefertigt

## Tee, long form

- long welding ends, for the use of electrofusion sockets
- in conformity with pressure class
- equal tees with outer diameter 560, 630, 710 and 900 are manufactured from our patented profile bars



DVGW:  
DV-8606BT0423 (Ø 75 mm - Ø 225 mm)  
DV-8611BT0424 (Ø 250 mm - Ø 630 mm)

Toleranzen/tolerance (S./p. 11):

$l_{e1}, l_{e2}, z_1, z_2$  --> Tab./tab. 1

TSL - 2021 #1

|     |      |    |    |    |      |    |      |    |   |     |   |     |
|-----|------|----|----|----|------|----|------|----|---|-----|---|-----|
| SDR | ≥ 41 | 33 | 26 | 21 | 17,6 | 17 | 13,6 | 11 | 9 | 7,4 | 6 | ≤ 5 |
|-----|------|----|----|----|------|----|------|----|---|-----|---|-----|

| d <sub>1</sub> | d <sub>2</sub> | l <sub>e1</sub> | l <sub>e2</sub> | z <sub>1</sub> | z <sub>2</sub> | D   | Gewicht<br>weight |        |      |
|----------------|----------------|-----------------|-----------------|----------------|----------------|-----|-------------------|--------|------|
|                |                |                 |                 |                |                |     | kg                | PE 100 | PP-R |
| 500            | 250            | 300             | 200             | 532,5          | 475            | 609 | 91,3              |        |      |
| 500            | 280            | 300             | 200             | 550            | 475            | 622 | 100               |        |      |
| 500            | 315            | 300             | 200             | 567,5          | 475            | 639 | 110,8             |        |      |
| 500            | 355            | 300             | 200             | 587,5          | 475            | 660 | 124,8             |        |      |
| 500            | 400            | 300             | 300             | 610            | 575            | 685 | 143,1             |        |      |
| 500            | 450            | 300             | 300             | 635            | 575            | 718 | 166,1             |        |      |
| 500            | 500            | 300             | 300             | 660            | 575            | -   | 184               |        |      |
| 560            | 160            | 300             | 200             | 487,5          | 500            | 636 | 86,6              |        |      |
| 560            | 180            | 300             | 200             | 497,5          | 500            | 641 | 90,4              |        |      |
| 560            | 200            | 300             | 200             | 507,5          | 500            | 647 | 94,5              |        |      |
| 560            | 225            | 300             | 200             | 520            | 500            | 655 | 100,1             |        |      |
| 560            | 250            | 300             | 200             | 532,5          | 500            | 664 | 106,4             |        |      |
| 560            | 280            | 300             | 200             | 550            | 500            | 676 | 115,6             |        |      |
| 560            | 315            | 300             | 200             | 567,5          | 500            | 692 | 127               |        |      |
| 560            | 355            | 300             | 200             | 587,5          | 500            | 711 | 141,7             |        |      |
| 560            | 400            | 300             | 300             | 610            | 600            | 734 | 160,8             |        |      |
| 560            | 450            | 300             | 300             | 635            | 600            | 763 | 186,6             |        |      |
| 560            | 500            | 300             | 300             | 660            | 600            | 797 | 216               |        |      |
| 560            | 560            | 300             | 300             | 770            | 600            | 836 | 244               |        |      |
| 630            | 180            | 300             | 200             | 497,5          | 540            | 708 | 113,3             |        |      |
| 630            | 200            | 300             | 200             | 507,5          | 540            | 714 | 117,8             |        |      |
| 630            | 225            | 300             | 200             | 520            | 540            | 721 | 123,9             |        |      |
| 630            | 250            | 300             | 200             | 532,5          | 540            | 729 | 130,7             |        |      |
| 630            | 280            | 300             | 200             | 550            | 540            | 740 | 140,7             |        |      |
| 630            | 315            | 300             | 200             | 567,5          | 540            | 754 | 152,8             |        |      |
| 630            | 355            | 300             | 200             | 587,5          | 540            | 772 | 168,3             |        |      |
| 630            | 400            | 300             | 300             | 610            | 640            | 794 | 188,5             |        |      |
| 630            | 450            | 300             | 300             | 635            | 640            | 820 | 215,5             |        |      |
| 630            | 500            | 300             | 300             | 660            | 640            | 849 | 247               |        |      |
| 630            | 560            | 300             | 300             | 690            | 640            | 889 | 282,5             |        |      |
| 630            | 630            | 300             | 300             | 795            | 640            | 935 | 325               |        |      |